

### SPECIFICATION: Passage Lockcase

S810

5572 / 6072 / 6572

Case: Stamped steel, 1.5mm thick, Zinc plated, 165mm x 85/90/95mm x 15mm

Front plate: SUS304 stainless steel 3mm thick, front standard size is 235mm x 24mm in square-end, (round-end optional).

Latch: SUS304 stainless steel, 13mm throw, reversible

Follower: lever support springs on square 8mm spindle.

Backset: 55mm / 60mm / 65mm available.

Applicable: wooden door / steel door

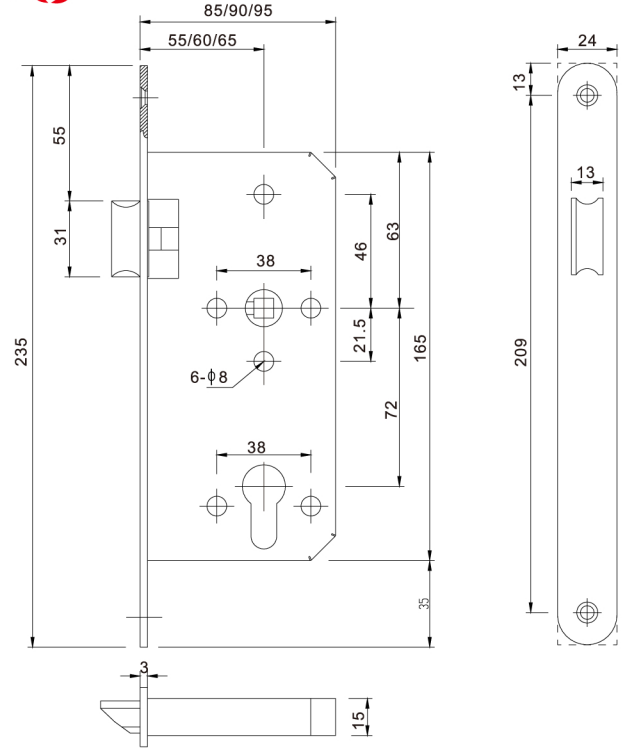
Handing: non-handed, field reversible

Finish: Satin stainless steel (32D)

Lockcase prepared fitted for standard fixings.

Function: Latch by lever both side.

Standard: Certified by EN12209 & EN1634-1, 4 hours fire rated



### SPECIFICATION: Deadbolt Lockcase

E700

5572 / 6072 / 6572

Case: Stamped steel, 1.5mm thick, Zinc plated, 165mm x 85/90/95mm x 15mm

Front plate: SUS304 stainless steel 3mm thick front standard size is 235mm x 24mm in square-end' (round-end optional).

Deadbolt: SUS304 stainless steel, 20.5mm, double throw projection.

Backset: 55mm / 60mm / 65mm available.

Applicable: wooden door / steel door

Handing: non-handed, field reversible

Finish: Satin stainless steel (32D)

Lockcase prepared fitted for Euro-profile cylinder and standard fixings.

Function: Deadbolt by key outside or thumb turn inside.

Standard: Certified by EN12209 & EN1634-1, 4 hours fire rated

